

LHXPO

THE CULMINATION OF THE 16 WEEK LAUNCHHOUSE ACCELERATOR PROGRAM

2.11.15 @ 4PM

PITCH / DEMO

- 5:30 NASA
FGC Plasma Solutions
- 6:00 Beegit
UpMo
- 6:30 Phazon
WJI Sensor
Alternative Defense Strategies
- 7:15 YOUReFOLIO
Triple Analytics



ABOUT LHX

LaunchHouse provides a collaborative ecosystem designed to foster entrepreneurship through coworking spaces, educational programming and a vast resource network. Since 2008, LaunchHouse has been able to help transform early-stage startups from idea to successful business and has provided more than \$780,000 in investment capital. Through development efforts, our community of mentors, connection with interns and a network of investors, these companies were able to raise more than \$20 million in follow-on funding.

In 2012, LaunchHouse launched the LaunchHouse Accelerator program, a 12-week, bootcamp style program to take technology startups from idea to validation. Since the conclusion of last year's program, the LHX2013 cohort have raised more than \$2.5 million in follow on funding. This year we did something a little different. We invested primarily in hardware companies and lengthened the program to 16 weeks in order to accommodate the different timelines of tech and hardware companies.

The Ohio Third Frontier ONEFund is an innovative approach to retaining and attracting the best and brightest talent to Ohio. This mentorship-driven program focuses on the professional development of young entrepreneurs with the necessary ambition to commercialize new technologies and looks to link promising new ventures in Ohio with early-stage investment capital. They provided \$200,000 for the Accelerator companies.

Alternative Defense
Strategies, Inc.



Lori A. O'Neill
29 E. Belmeadow Lane
Chagrin Falls, OH 44022
216-470-3086

Alternative Defense Strategies, Inc. develops less lethal defense products and training for K-12 schools, colleges and universities, and businesses to enable them to respond to active shootings and violent attacks without permanently harming bystanders.

Beegit

Mike Cottrill
mike@beegit.com
330.328.2674



Beegit is the easiest way for professional teams to write together. Our software platform automates processes during content creation that simplify approval, editing and reporting to save everyone involved time.

FGC Plasma Solutions

Felipe Gómez del Campo
Felipe.gomez@fgcplasma.com
954.591.1429



FGC Plasma Solutions is developing a revolutionary new fuel injector for jet engines. Our patent pending GALDI fuel nozzle technology will use plasma to solve many marginal combustion problems thereby making flying safer and more efficient.

NASA

Matt Moran
matthew.e.moran@nasa.gov



There is an ongoing need for elimination of organic contaminants from water such as: bacteria, viruses, parasites, fungi, algae, pharmaceuticals, fertilizers, and biowaste. NASA's patent pending technology allows plasma generated reactive species to decompose organic contaminants using only electrical energy. This solution has the ability to purify water without filters or chemicals, destroy water soluble and sub-micron organic contaminants, and improve performance and reduce downtime for water management systems.

Phazon

Thomas Hayes
thomas.hayes@phazon.ca
216.507.7996



Phazon produces fully wireless, waterproof earbuds for extreme people. Through unique design and utility we are able to offer a universal fit in an attractive modern package with the convenience of charging on the go.

Swing Memory Xccelerator

Bob Means
bob@launchhouse.com



Swing Memory Xccelerator is a subtle and compact “playing aid” that can be used with your own clubs on the course during a regulation round of golf. Through use during practice swings prior to hitting a shot, SMX can help a golfer develop and perform a repeatable, precision golf swing that includes proper sequencing, increased club head speed, increased accuracy and more balanced follow-through by improving the golfers use of four planes: club, shaft, hands and shoulders.

Triple Analytics

Cal Al-Dhubaib
Cal@tripleanalytics.com
216.925.7259



The Triple Analytics data-driven decision support software: (1) improves individual quality of care and (2) population health while (3) reducing costs. Triple bridges this gap through the unique approach of data-driven Markov modeling to provide a powerful stratification system with low overhead. The platform powers solutions at the intersection of hospital analytics, policy generation support, and population health management.

UpMo

Len Gray
len@inlaw.me
678.592.4356



UpMo creates smartphone-based platforms for job searching and the easy submission of applications that fit with a job seeker's mobile lifestyle. UpMo's apps are industry-specific, with the first product tailored to the legal field. Because each app is developed with the idiosyncratic needs and hiring systems of a specific vertical in mind, UpMo's solutions more fully and more efficiently address client pain points than the one-size-fits-all solutions currently available.

WJI SENSOR

Toby Nice
twn3@case.edu
440.537.1891



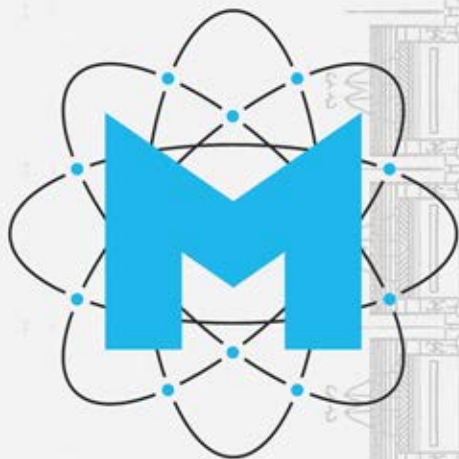
WJI Sensor provides a cloud-based monitoring system for property management companies. Throughout the country property managers rely on regular maintenance and personnel to check properties, which results in added cost and inefficiencies. The WJI Sensor system allows property managers a quick and easy way to monitor a property's moisture, temperature and detect motion from mobile devices.

YOUReFOLIO

Scott Huff
twn3@case.edu
440.537.1891



YourEfolio is hybrid advisor driven software that helps advisors attract new clients, improve upon their existing client relationships and provides compliance solutions. The software program takes the advisor and their clients through an insightful process and upon completion the data is analyzed by a patent pending algorithm. Advisors will be able to store for their clients valuable documents, provide clear explanations to those documents and allow those documents to be accessed by their clients' loved ones or beneficiaries.



INVESTING IN INTELLECT

www.menschcapital.com



CASE WESTERN RESERVE
UNIVERSITY EST. 1826

think beyond the possible®

Proud Supporters:

• Career Center
• [thinkbox]

• Blackstone LaunchPad

CASE WESTERN RESERVE UNIVERSITY

• The
Burton D. Morgan
Foundation

Committed to the Free Enterprise System®

THANK YOU MENTORS!



**MENTORS
IN
ACTION!**

SPONSORS/PARTNERS

LHX would like to thank all of the companies, organizations and individuals that helped to make this program possible!

LHX2014 SPONSORS

GOLD

Taft/

SILVER

Case Western Reserve University

Mensch Capital

Renner Otto

Spero Smith

BRONZE

CWRU School of Law IP Venture Clinic

LHX2014 PARTNERS

Cardboard Helicopter

Cleveland State University Monte Ahuja College of Business

Jumpstart & Entrepreneur Signature Program Collaborators

Makers Alliance

Matt Kashuk

NASA

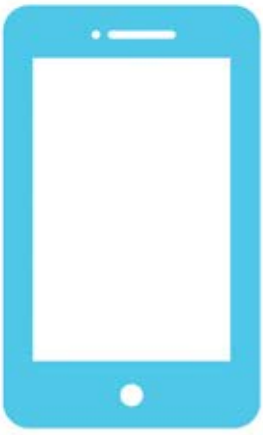
NorTech

Rock The House

Taft/

Think[box]

Thogus



@LaunchHouse

#LHXPO