

Create
➤ **Nostalgia for Now** ➤

HUNTINGTON presents

Winterfest

2012

ANNUAL LIGHTING OF
Public Square
SATURDAY, NOVEMBER 24TH

INSIDE:
CLEVELAND'S OFFICIAL
HOLIDAY GUIDE



downtowncleveland.com



Presenting Sponsor



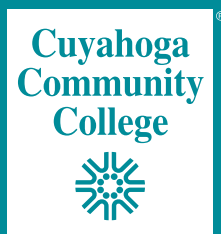
Powered by



Supplement to *Cleveland*

Enroll now!

Classes begin January 14.



Where
futures
beginSM

www.tri-c.edu | 800-954-8742

Welcome to Winterfest

Kick off the holiday season in the city's vibrant core.

Downtown Cleveland is electric. From emerging businesses and new construction to the time-honored traditions that generations have cherished, this is our time to shine.

On Saturday, Nov. 24, Public Square will be infused with lights, laughter, entertainment and activities for the entire family to enjoy. It's time for Winterfest, Downtown Cleveland's holiday lighting tradition filled with exciting new elements that showcase the energy and enthusiasm unique to this area.

All ages are invited to soak in holiday cheer and take part in the daylong festivities. New and old meet on Nov. 24 when horse-drawn carriages will be available to take visitors on an old-fashioned tour of some of Downtown Cleveland's new sights. At 2 p.m., Radio Disney will electrify Public Square with a lively show featuring its well-known personalities, including a special show at 5 p.m.

Hungry for something different? Walk right up to an assortment of Cleveland's finest gourmet food trucks and indulge in culinary delight. Across the square from these popular mobile eateries, Winterfest participants will have the opportunity to shop for one-of-a-kind gifts at the Holiday Pop-Up Shop. Some of Cleveland's top designers from Cleveland Handmade Market will be selling locally

designed merchandise and more. This all means visitors can eat, shop and be merry.

Following the singing and dancing performance, Santa and his elves will join city officials to turn on the holiday lights. With crowds gathering around the illuminated tree, fireworks will provide an exciting exclamation point on a full day of holiday activities.

But, the fun doesn't stop when the smoke clears. Huntington's Winter Wine and Ale Fest will keep the party rolling as ticket holders get to sample local wine, craft beers and a wide variety of food. Tickets for this event are \$50 and proceeds go to GeneroCITY, a program run by Downtown Cleveland Alliance that helps the homeless population connect to the services and get off the streets and into permanent housing.

"We are excited to have the opportunity to work with Downtown Cleveland Alliance, the City of Cleveland and other partners to highlight the best that Cleveland has to offer," says Dan Walsh, regional president of Huntington National Bank. "There is a tremendous amount of momentum Downtown. This is Cleveland's time, and we are pleased to invite everyone to join in the celebration and experience the renaissance."



WELCOME TO WINTERFEST

WISHING YOU A BRIGHT, FESTIVE AND
JOYOUS HOLIDAY SEASON.

 **Huntington**
Welcome.™



The Huntington National Bank is an Equal Housing Lender and Member FDIC. ® and Huntington are federally registered service marks of Huntington Bancshares Incorporated. Huntington. ® Welcome.™ is a service mark of Huntington Bancshares Incorporated. © 2012 Huntington Bancshares Incorporated.

City of Lights

The annual Winterfest event will shine with exciting events and an innovative plan to light the square. BY KELLY PETRYSZYN

Strolling through Public Square on Nov. 24 will take you back in time. Smiling families will tour the city in horse-drawn carriages. Singers will bop along to tunes of Christmases past. A towering evergreen will glow in colored lights as awestruck Clevelanders look on.

Winterfest has been coming to life with the help of Huntington National Bank, Downtown Cleveland Alliance and GE Lighting, among other sponsors, for nearly 30 years.

“Winterfest creates special holiday nostalgia throughout Downtown Cleveland, and it also really brings families together in the holiday spirit,” says Samantha Severo, public relations and marketing specialist for Downtown Cleveland Alliance (DCA).

More than 40,000 visitors will gather in Public Square starting at noon the Saturday after Thanksgiving to kick off their holiday season. Find something for everyone on your Christmas list at the Holiday Pop-Up Shop featuring Cleveland Handmade Market, an alliance of local artisans. Fill empty stomachs with festive fare at the Chow Down, packed with food trucks. Enjoy

Management Center at 7 p.m.

In honor of GE Lighting’s upcoming 100th anniversary of having its world headquarters at Nela Park in East Cleveland, volunteers will pedal seven custom bikes for 12 hours as part of the B3 Bike Marathon to generate the 2,300 watts needed to power the tree strung in LED lights for 100 minutes.

GE Lighting and its partner school, MC2 STEM High School, aligned to build light revolution bicycles that kinetically power batteries, which then power the tree. One-hundred sixty-eight riders, including GE Lighting employees, STEM students and their families, will start pedaling at 5:30 a.m. on Nov. 24 to charge batteries in time for the lighting ceremony.

A method like this has never been attempted to light the tree. Plus, the marathon will teach visitors a lesson in sustainability. While 12 hours seems like a long time, it is short considering the alternative of using incandescent lights.

“If we were powering an incandescent tree the same size we’d need 35,600 watts of power, or a ride of 188.4 hours,” says Andrea Timan, GE Lighting community relations manager. “There’s a really big difference being able to utilize the LED string lights.”

Also, the rest of Downtown will be even brighter



GE Lighting and its partner school, MC2 STEM High School, aligned to build light revolution bicycles that kinetically power batteries, which then power the tree.

a “Glee”-style show from Radio Disney in Public Square, while other concerts rock

on at venues such as the Old Stone Church. Top off the merry day by getting a picture with Santa Claus.

Football fans will be able to tune into the big The Ohio State University vs. Michigan game on a big-screen TV mounted in Public Square. The classic evening concludes with the one-of-a-kind tree lighting ceremony at 6 p.m., followed by a festive firework show and a Public After-Party with Santa at Tri-C Hospitality

this year, thanks to new streetlights and post tops GE made possible by donating \$125,000 to DCA. GE also donated 4,100 strings of LED lights to illuminate Public Square and the tree — strands that add up to 100,000 feet in honor of its 100th anniversary. The display’s LED lights will consume 22,725 watts, while incandescent lights would have consumed 150,000 watts. GE has been using LED lights for the past three years and has been donating lights to Winterfest for more than 35 years.

“This is a great Cleveland holiday tradition,” says Timan. “It’s wonderful to celebrate with the Cleveland community during the holiday and be able to light up Public Square — this iconic Cleveland landmark — year after year.”



Event Highlights

Ohio State vs Michigan

Noon-End of game: The Ohio State University vs. Michigan football game will be aired on a big screen television in Public Square.

Radio Disney

2-5 p.m.: Radio Disney AM 1260 will once again be on-site with music and family-friendly activities.

5-6 p.m.: Don't miss a one-hour show leading up to the official start of the Holiday Ceremony.

Holiday Pop-Up Shop, featuring Cleveland Handmade Market

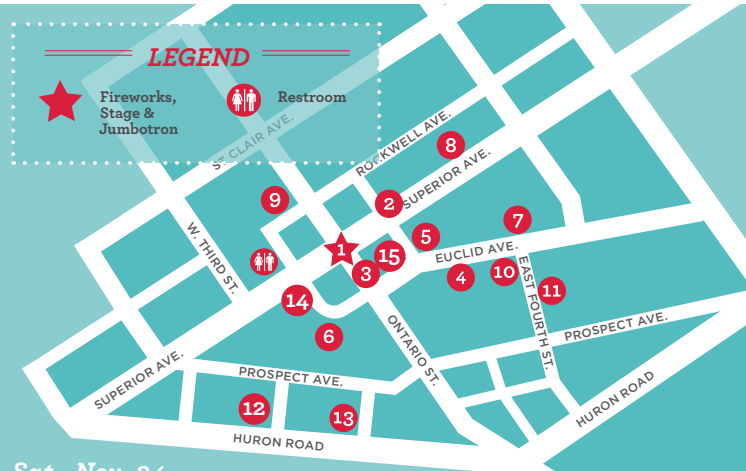
2-7 p.m.: Get a jump on your holiday shopping with offerings from great local vendors.

Gourmet Food Truck Chow Down

2-7 p.m.: Head to Ontario Avenue between Superior and Euclid avenues to sample grub from local food trucks, including Motormouth, The Nosh Box, StrEat Mobile Bistro, Krav, Cracked Cleveland, Fired Up Taco Truck, JiBARO, the Donut Lab, Sweet! Mobile Cupcakery, B & M Barbeque Truck

Huntington Presents Winter Wine & Ale Fest

7-10 p.m.: Tickets for WWAFF give you access to one of Downtown's most glamorous social events. Guests are given 20 samples from Ohio's finest breweries and wineries as well as heavy hors d'oeuvres from local eateries. Proceeds benefit GeneroCITY Cleveland, which provides programs and services to the homeless of Downtown. *Tickets are \$50 and can be purchased at downtowncleveland.com/wwaf.*



Sat., Nov. 24

Winterfest Original Events

- 1** **Ohio State vs. Michigan**
Noon-End of game
Public Square
- 2** **Free Holiday Carriage Rides**
1-5 p.m.
Superior and East Roadway
- 3** **Gourmet Food Truck Chow Down**
2-7 p.m.
Ontario Avenue between Superior and Euclid
- 4** **Public After-Party with Santa Claus**
7-8 p.m.
Tri-C Hospitality Management Center
- 5** **Winter Wine & Ale Fest** (ticketed event)
7-10 p.m.
200 Public Square

Partner Venues

- 6** **Tower City Center**
230 W. Huron Road
- 7** **The Arcade**
401 Euclid Ave./420 Superior Ave.
- 8** **Cleveland Public Library**
325 Superior Ave. NE
- 9** **Old Stone Church**
91 Public Square
- 10** **Positively Cleveland Visitors Center**
334 Euclid Ave.
- 11** **East Fourth Street**
- 12** **The Ritz-Carlton**
1515 West Third Street
- 13** **Hard Rock Cafe**
230 W. Huron Road
- 14** **Cleveland State University Wolstein Center's Street Team**
West Roadway
- 15** **Soldiers & Sailors Monument**
3 Public Square

Partner Venue Events

- 6 Tower City Center**
towercitycenter.com
Retail Hours: 10 a.m.-7 p.m.
Restaurants, cinemas and some retail store hours may vary.
- 10 a.m.-9 p.m.:** Kringle's Inventionarium & Kringle's QuickSnap (Level 1 next to the TwigbeeShop); Visit mrkringle.com for reservations.
- 10 a.m.-9 p.m.:** Bruce the Talking Spruce (Level 1 next to City Leather)
- 10 a.m.-3 p.m.:** Holiday Express Train Ride (Level 1 across from Playball Sports); Tickets available at Guest Services or Kringle's Inventionarium
- 11 a.m.-7 p.m.:** The Twigbee Shop (Level 1 next to Sweet Factory; for kids 12 and under)
- 1 p.m., 3 p.m. and 7 p.m.:** The Toy Soldier & Fairy Godmother Holiday Show & Meet & Greet (Grand Staircase)
- 7 The Arcade, a Cleveland Classic**
thecllevelandarcade.com
Noon-1 p.m.: Stop by The Arcade for lunch specials at the food court or Chocolate Bar; visit with Santa from Noon-1 p.m. and continue your holiday shopping at the Arcade Shops.
- 2-4 p.m.:** Take your picture with Santa on his vintage sleigh; enjoy face painting, magical entertainment and guided tours of the Arcade at 2:30

continued... →

Partner Venue Events *continued from p. WF5*

p.m. and 3:30 p.m. Meet historic characters from Cleveland's past and hear the sounds (or sing along) with strolling Dickens Carolers. Design and produce your own unique snowflake to take home or leave for display at the Arcade all season.

8 Cleveland Public Library cpl.org

10 a.m.-4 p.m.: Enjoy interactive model trains courtesy of Cuyahoga Valley S-Gauge Association in the Louis Stokes Wing on the lower level.

1-3 p.m.: Get a look at live reindeer in the Eastman Reading Garden.

1-4 p.m.: Listen to holiday stories and take part in crafts in Youth Services in the Main Library on the fourth floor.

1-5 p.m.: Take a photo with Conductor Comet the Reindeer.

2 p.m.: Hear live holiday music in the Louis Stokes Auditorium, followed by cookies and cider.

9 Old Stone Church oldstonechurch.org

3:30-5:30 p.m.: Drop off items for the non-perishable food collection.

4 p.m.: Enjoy a concert featuring singer/songwriter Tia McGraff.

5 p.m.: Warm up at a cocoa-and-cookie reception.

Post-fireworks: Kick off the season by listening to a Christmas choral concert.

10 Positively Cleveland Visitors Center positivelycleveland.com

Noon-5 p.m.: Stop by the visitors center to get information about Cleveland holiday events and winter fun.

1-4 p.m.: Join the Positively Cleveland Visitors Center and the Cleveland Metroparks Zoo for Get Close Animal Encounters. Visit and hang out with live animals, with a special guest appearance by Ele the Elephant.

11 East Fourth Street east4thstreet.com

7:30-9:30 p.m.: Watch ice-sculpture demonstrations as a sculptor turns five blocks of ice into wintery pieces of art right in the middle of East Fourth Street.

12 Ritz-Carlton, Cleveland ritzcarlton.com/cleveland

Open all day: Winterfest at the Ritz-Carlton is a Cleveland tradition. This year's intricate gingerbread house should not be missed. Visit the lobby on level 6 of the hotel to see for yourself why this holiday favorite has become a part of many family memories.

13 Hard Rock Café hardrock.com/cleveland

11 a.m.-1 p.m.: Bring your kids downtown so they can rock out with Santa Claus. Chillin' with the Kringle gives kids a chance to feel like little rock stars. They'll get free punk rock hairstyling and temporary tattoos. Bring your camera to take pictures while your little rockers hang out with Santa and enjoy homemade cookies. Donations will be taken to support World Hunger Year.

14 Cleveland State University Wolstein Center's Street Team

Cleveland State University's Wolstein Center's street team will be bringing lots of games, prizes and excitement to Winterfest. Games include: Wolstein Pop-A-Shot basketball hoop, Prize Wheel with lots of fun prizes and an Enter-to-Win sign up

box for a chance to win tickets to an upcoming show. Join this energetic street team to kick-off the holidays and to get a preview of the center's upcoming events.

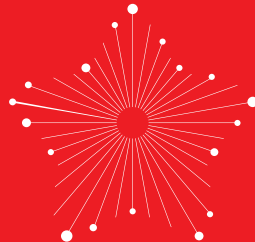
15 Lake Erie Monsters lakeeriemonsters.com

7:30 p.m.: Watch the Lake Erie Monsters battle the Rockford Icehogs on the ice during this Thanksgiving weekend game. Go to the website for tickets.

16 Cuyahoga County Soldiers' and Sailors' Monument

soldiersandsailors.com
9 a.m.-6 p.m.: The monument will be open and Santa will be there. Enjoy some old-fashioned Victorian hospitality and learn about Christmas during the Civil War. Bring the kids and the camera, and visit the jolly old elf himself.

Join the City of Cleveland, Department of Public Utilities, as we celebrate



Winterfest

Visit the Department of Public Utilities' tent for tips on holiday electric safety, water conservation and usage, and clean stormwater practices. Also activities for the children!



CITY OF CLEVELAND
Mayor Frank G. Jackson

Cleveland Public Power
Count on it.

THIS HOLIDAY

GIVE

THE GIFT OF
CLEVELAND

CLE CLOTHING CO.

SHOP 2 WAYS
DOWNTOWN

342 EUCLID AVE. ON THE CORNER OF
EUCLID & E 4TH ST.

OPEN MON-SAT 11A-9P & SUN 12-6

ONLINE AT CLECLOTHINGCO.COM



MADE IN THE USA & PRINTED IN CLEVELAND

INDEPENDENT AND LOCALLY OWNED...SHOP LOCAL!
GET SOCIAL WITH CLE! TWITTER: @CLECLOTHINGCO - FACEBOOK: FACEBOOK.COM/CLECLOTHING



OHIO



SHOP LOCAL NATIVE
CLEVELAND



**LOCALS
ONLY**



UNIVERSITY CIRCLE
SHAKER SQUARE
WEST PARK
EAST 185 TO
THE FLATS
EAST 4TH STREET
POWER CITY
LITTLE ITALY
PLAZAHOUSE SQUARE
MINTON

CLE

15813 WATERLOO ROAD

Ongoing Events

The Toy Soldier & Fairy Godmother Holiday Show

Call or visit website for dates and times.
Tower City, 230 W. Huron Road, 216-623-4750
towercitycenter.com

Holiday Express Train Ride

Call or visit website for dates and times.
Tower City, 230 W. Huron Road, 216-623-4750
towercitycenter.com

Bruce the Talking Spruce

Call or visit website for dates and times.
Tower City, 230 W. Huron Road, 216-623-4750
towercitycenter.com

The Twigbee Shop

Call or visit website for dates and times.
Tower City, 230 W. Huron Road, 216-623-4750
towercitycenter.com

The Cleveland Orchestra Christmas Concert

Call or visit website for dates and times.
Tickets: \$35-\$85
Severance Hall, 11001 Euclid Ave., 216-231-1111
clevelandorchestra.com

Traditional Holiday

Call or visit website for dates and times.
Reservations: Call
The Ritz-Carlton, Cleveland
1515 W. Third St., 216-902-5255
ritzcarlton.com/cleveland
Celebrate this holiday season with your loved ones by enjoying a selection of traditional favorites including tea sandwiches, pastries and a selection of fine teas.

Downtown Farmers Market Holiday Market: Through Dec. 21, Fridays 11 a.m.-2 p.m.

Colonial Arcade
530 Euclid Ave.
downtownclevelandmarket.blogspot.com

Teddy Bear Tea

Dec. 9, 15, 16, 22 & 23
Reservations: Call
The Ritz-Carlton, Cleveland
1515 W. Third St., 216-902-5255
ritzcarlton.com/cleveland
Designed for the young and the young at heart.

The Made in the 216 Holiday Shoppe

Through Dec. 24
Room Service & Made in the 216
2078 W. 25th St., 216-696-6220
rscleveland.com
Cleveland's shopping destination for locally designed and produced gifts.

Spirit of the Season

Happy Hour
Weekdays, Nov. 26- Dec. 30: 5 p.m.
The Ritz-Carlton, Cleveland
1515 W. Third St., 216-902-5255
ritzcarlton.com/cleveland
Celebrate this holiday season by sipping champagne and other seasonal favorites!

DIY: Photographers & Books

Through Dec. 30
Cleveland Museum of Art
11150 E. Blvd., 216-421-7350
clevelandart.org

Wari: Lords of the Ancient Andes

Through Jan. 6
Cleveland Museum of Art
11150 E. Blvd., 216-421-7350
clevelandart.org

Mary Cassatt and the Feminine Ideal in 19th Century Paris

Through Jan. 21
Cleveland Museum of Art
11150 E. Blvd., 216-421-7350
clevelandart.org

William H. Johnson: An American Modern

Through Jan. 27
Cleveland Museum of Art
11150 E. Blvd., 216-421-7350
clevelandart.org

Studio Glass in Focus: Dialogue and Innovation

Through April 14
Cleveland Museum of Art
11150 E. Blvd., 216-421-7350
clevelandart.org

The Whipping Man

Nov. 2-25 Tickets: \$49-69
PlayhouseSquare, Second Stage
1407 Euclid Ave., 216-241-6000
playhousesquare.org

Nov. 17

Chinese Story Time

Nov. 17: 3:30 p.m.
Cleveland Public Library, 325 Superior Ave., 216-623-2800
cpl.org
Kids ages 4-6 can learn to write Chinese characters and hear stories in Chinese and English.

Nov. 21

Annual Gingerbread House Display

Nov. 21-Dec. 30 Located in the Lobby on the 6th floor, The Ritz-Carlton, Cleveland
1515 W. Third St., 216-902-5255
ritzcarlton.com/cleveland

Cleveland Cavaliers vs. Philadelphia 76ers

Nov. 21: 7 p.m. Tickets: Call or visit website
Quicken Loans Arena, One Center Court, 216-420-0000
clevelandcavaliers.com



EVERYBODY HAVE FUN TONIGHT

NEW YEAR'S EVE PACKAGE FOR ROCKERS

Monday, December 31, 2012 • 9pm-1am
\$375 per couple **plus tax*

Deluxe overnight accommodations & complimentary self parking at the Renaissance Cleveland Hotel.
New Year's Eve party at Hard Rock with live music by The Dirty Little Rock Stars.

Reservations: 1-800-Hotels1 or RenaissanceCleveland.com

R
RENAISSANCE
CLEVELAND HOTEL



Hard Rock
CAFE

SEE THE SHOW
CLEVELAND

230 WEST HURON RD.
+1-216-830-7625 • HARDROCK.COM
FACEBOOK.COM/HARDROCK

©2012 Hard Rock International (USA), Inc. All rights reserved.

Nov. 23

**The Cleveland Orchestra:
Chopin and Rachmaninoff**

Nov. 23-25 Tickets: \$49-\$165
Severance Hall, 11001 Euclid
Ave., 216-231-1111
clevelandorchestra.com

Kringle's Inventionarium

Nov. 23-25, 30 & Dec. 1-2, 6-9, 13-23
10 a.m.-8 p.m. Daily, 11 a.m.-7 p.m. Sundays
Tower City, 230 W. Huron
Road, 216-623-4750
towercitycenter.com

Kringle's Quicksnap

**Nov. 23-25, 30 & Dec. 1-2,
8-9, 15-16, 21-23**
10 a.m.-8 p.m. Daily,
11 a.m.-7 p.m. Sundays
Tower City, 230 W. Huron
Road, 216-623-4750
towercitycenter.com

**Lake Erie Monsters vs.
Rockford Icehogs**

Nov. 23: 7:30 p.m. Tickets: \$10-\$65
Quicken Loans Arena
One Center Court, 216-420-0000
lakeerimonsters.com

Nov. 24

**Home Sweet Cleveland,
Hosted by Global Cleveland &
Cleveland Leadership Center**

Nov. 24: 4-6 p.m.
Pura Vida, 170 Euclid Ave.
homesweetcleveland.eventbrite.com
Stop by a happy hour event at Pura Vida
to welcome newcomers, boomerangs
and out-of-town visitors for a night

*of food, drinks and networking with
professionals and top business
leaders from our region. Bring a
friend, neighbor or colleague.*

**The AP Tour featuring Miss
May I, The Ghost Inside
and Special Guests**

Nov. 24: 6:30 p.m. Tickets: \$17-\$19
House of Blues Cleveland
308 Euclid Ave., 216-523-2583
houseofblues.com

Nov. 25

Rockin' Football Brunch

Nov. 25, Dec. 9 & 16: 8 a.m.-1 p.m. Tickets:
\$13.95 8-10 a.m.; \$19.95 adults, \$9.95
children 10 and under 10 a.m.-1 p.m.
Hard Rock Café Cleveland, 230
W. Huron Road, 216-830-7625
hardrock.com/cleveland

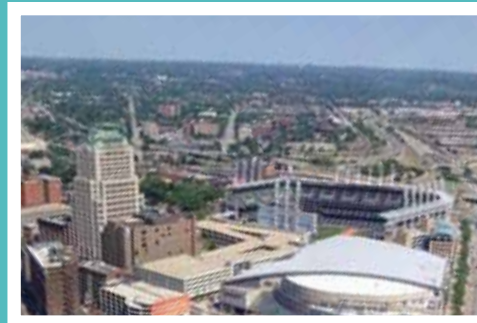
*Join the Hard Rock Cafe before all the
home football games. Free Rockin'
Shuttle to and from the stadium.*

**Cleveland Browns vs.
Pittsburgh Steelers**

Nov. 25: 1 p.m. Tickets:
Call or visit website.
Cleveland Browns Stadium
100 Alfred Lerner Way, 440-824-3434
clevelandbrowns.com

A Joyous Christmas Celebration

Nov. 25: 2 p.m. Tickets: \$10-\$35
PlayhouseSquare, Palace Theatre
1615 Euclid Ave., 216-241-6000
playhousesquare.org



**Terminal Tower Observation Deck
Through Dec. 16: Tours available Saturdays
noon-5 p.m., Sundays noon-4 p.m.**

Tickets: \$5 (plus a handling fee) per person,
children under 5 are free; purchase tickets
online, buy same-day tickets at Tower
City's Guest Services desk on Level 1
230 W. Huron Road
**216-623-4750, [eventbrite.com/
org/570713222?s=6433013](http://eventbrite.com/org/570713222?s=6433013)**

Get a different perspective of Cleveland during
the bustling holiday season by taking in the city
from 708 feet above the ground on the Terminal
Tower Observation Deck. "It's a tremendous
sight to see that many people from above,"
Terminal Tower General Manager Stephen Bir
says of the deck on the 42nd floor. It is the
only place in Cleveland where you can get
360-degree views of the city 30 miles east, west,
north and south of the downtown landmark.



SANTA CLAUS IS COMING TO TOWN

Join us for Breakfast With Santa
in an unforgettable atmosphere.

**Saturday, December 8 &
Saturday, December 15 • 9am**

Adults \$13.95 • Children 3 & under free with paid adult.

For reservations, call +1-216-344-3859
or email Cleveland_sales2@hardrock.com



**SEE
THE
SHOW**
CLEVELAND

230 WEST HURON RD.
+1-216-830-7625 • HARDROCK.COM
FACEBOOK.COM/HARDROCK

©2012 Hard Rock International (USA), Inc. All rights reserved.

Nov. 26

Winter Chamber Music Festival

Nov. 26-Dec. 4: Times vary; one event is not free. Cleveland Institute of Music 11021 E. Blvd., 216-791-5000 cim.edu

Students and faculty perform percussion, woodwind, strings and piano ensembles.

Nov. 27

Cleveland Cavaliers vs. Phoenix Suns

Nov. 27: 7 p.m. Tickets: Call or visit website Quicken Loans Arena, One Center Court, 216-420-0000 clevelandcavaliers.com

Nov. 28

The Santaland Diaries

Nov. 28-Dec. 22 Tickets: \$20-30 PlayhouseSquare, 14th Street Theatre, 2037 E. 14th St., 216-241-6000 playhousesquare.org
Best-selling author David Sedaris' The Santaland Diaries is the story of an out-of-work actor taking a job as Crumpet, a Macy's Christmas elf.

Cleveland State University Women's Basketball vs. Virginia Commonwealth

Nov. 28: 7 p.m. CSU Wolstein Center, 2000 Prospect Ave., 216-687-4848 csuhoops.com

Nov. 29

The Cleveland Orchestra Presents The Joffrey Ballet's The Nutcracker

Nov. 29-Dec. 2 Tickets: \$10-\$85 PlayhouseSquare, State Theatre 1519 Euclid Ave., 216-241-6000 playhousesquare.org

My Mother's Italian, My Father's Jewish, I'm Home for the Holidays

Nov. 29: 7:30 p.m. Tickets: \$10-\$45 PlayhouseSquare, Palace Theatre 1615 Euclid Ave., 216-241-6000 playhousesquare.org

Nov. 30

A Christmas Carol - presented by Great Lakes Theater

Nov. 30-Dec. 23 Tickets: \$28-\$60 PlayhouseSquare, Ohio Theatre 1511 Euclid Ave., 216-241-6000 playhousesquare.org
Open your heart to Charles Dickens' classic tale of one man's ultimate redemption.

A Carol for Cleveland

Nov. 30-Dec. 23 Tickets: \$49-\$69 PlayhouseSquare, Allen Theatre 1407 Euclid Ave., 216-241-6000 playhousesquare.org

Lake Erie Monsters vs. San Antonio Rampage

Nov. 30: 7:30 p.m. Tickets: \$10-\$65 Quicken Loans Arena, One Center Court, 216-420-0000 lakeerimonsters.com

Dec. 1

The Cleveland Orchestra PNC Musical Rainbow—The Vivacious Viola

Dec. 1: 10 & 11 a.m. Tickets: \$7 Severance Hall, 11001 Euclid Ave., 216-231-1111 clevelandorchestra.com

Tinsel Town: A Holiday Celebration for Families at PlayhouseSquare

Dec. 1: Noon-2 p.m. Tickets: Family Four Pack \$40, Adult \$8, Child \$14 PlayhouseSquare, Palace Theatre 1615 Euclid Ave., 216-241-6000 playhousesquare.org

Lake Erie Monsters vs. San Antonio Rampage

Dec. 1: 1 p.m. Tickets: \$10-\$65 Quicken Loans Arena, One Center Court, 216-420-0000 lakeerimonsters.com

Cleveland State University Men's Basketball vs. Toledo

Dec. 1: 2 p.m. Tickets: Start at \$8 CSU Wolstein Center, 2000 Prospect Ave., 216-687-4848 csuhoops.com

Music at Main

Dec. 1: 2 p.m. Cleveland Public Library, 325 Superior Ave., 216-623-2800 cpl.org
Cleveland Institute of Music student ensembles perform.

Cleveland Cavaliers vs. Portland Trail Blazers

Dec. 1: 7:30 p.m. Tickets: Call or visit website Quicken Loans Arena, One Center Court, 216-420-0000 clevelandcavaliers.com

Dec. 2

JAMfest Cheer and Dance Competition

Dec. 2: Doors open at 8 a.m., Starting time TBA CSU Wolstein Center, 2000 Prospect Ave., 216-687-4848

Holiday Circlefest Event

Dec. 2: 1 p.m. Tickets: Free Cleveland Institute of Music 11021 E. Blvd., 216-791-5000 cim.edu
Peter and the Wolf - portions with actors, narrator and orchestra (NEW), the Nutcracker with a harp ensemble, and other holiday performances.

THE ARCADE

A CLEVELAND CLASSIC SINCE 1890



CELEBRATE WINTERFEST WITH US!

Activities from 2p to 4p

- Mix & Mingle with Characters from Cleveland's Past!
- Pictures with Santa Claus on his Vintage Sleigh
- Take a Guided Tour of The Arcade (2:30p & 3:30p)
- Sing along with Strolling Dickens Carolers
- Enjoy Magical Entertainment
- Snowflake Crafts to Take Home!
- Enjoy Lunch or Dinner and Browse the Shops!

BROUGHT TO YOU BY:

Arcade Chiropractic Clinic • Arcade Convenience • Brass Tack Shoe Repair • Designer Suits • Federal Coin Exchange • Hyatt Regency Cleveland • Marengo Luxury Spa • The Runway • US Postal Service • Valentina's Tailor Shop • Chocolate Bar Cleveland • Greek Express • Presto Sandwiches • 1890 Restaurant & Lounge • Charley's Steakery • Zen Cuisine

SHOPS ▸ SERVICES ▸ DINING

401 Euclid Ave / 420 Superior Ave • Cleveland, Ohio • 216-696-1408 • www.TheClevelandArcade.com

Find "The Arcade" on Facebook to receive regular updates!





Downtown Farmers Market, Holiday Market at Fifth Street Arcades

Through Dec. 21, Fridays 11 a.m-2 p.m.

Colonial Arcade, 530 Euclid Ave.
downtownclevelandmarket.blogspot.com

The Downtown Farmers Market provides Downtown residents and employees with access to fresh, local produce. In its third season, much of the produce sold at the producer-only market is grown in Cleveland. With the help of greenhouses and hoop houses, DFM farmers have extended their growing season and will have many unique items, such as peanuts, micro greens, Christmas lima beans and Jersey Wakefield kraut cabbage. In addition to fresh produce, locally-produced specialty items such as jams, jellies, baked goods, grass-fed cheese, salsas and granola bars will be available. Passersby will smell chestnuts roasting, while shoppers coming down for lunch will find made-to-order crepes and Indian cuisine.

Four Bitchin' Babes: Jingle Babes!

Dec. 2: 7 p.m. Tickets: \$10-\$37.75
 PlayhouseSquare, Palace Theatre
 1615 Euclid Ave., 216-241-6000
playhousesquare.org

Dec. 5

Tap Dogs

Dec. 5: 7:30 p.m. Tickets: \$10-\$39.50
 PlayhouseSquare, Palace Theatre
 1615 Euclid Ave., 216-241-6000
playhousesquare.org

Cleveland Cavaliers vs. Chicago Bulls

Dec. 5: 8 p.m. Tickets: Call or visit website
 Quicken Loans Arena, One Center Court, 216-420-0000
clevelandcavaliers.com

Grace Potter & The Nocturnals

Dec. 5: 8 p.m. Tickets: \$26-\$40
 House of Blues Cleveland
 308 Euclid Ave., 216-523-2583
houseofblues.com

Dec. 6

Dave Koz and Friends Christmas Tour 2012

Dec. 6: 7:30 p.m. Tickets: \$10-\$65
 PlayhouseSquare, Palace Theatre
 1615 Euclid Ave., 216-241-6000
playhousesquare.org

A magical combination of musicians celebrate this special season.

Dec. 7

The Cleveland Orchestra PNC Holiday Rainbow—Music of Chanukah

Dec. 7: 10 a.m. Tickets: \$7
 Temple Tifereth Israel
 26000 Shaker Blvd., Beachwood 216-231-1111
clevelandorchestra.com

Dec. 8

Breakfast with Santa

Dec. 8 & 15: 9-11 a.m. Cost: \$13.95, children 3 and under free
 Hard Rock Café Cleveland
 230 W. Huron Road, 216-830-7625
hardrock.com/cleveland
Bring your little rocker in to the Hard Rock Cafe to enjoy a delicious brunch and chance to sit on Santa's lap.

Cleveland State University Women's Basketball vs. Miami (Ohio)

Dec. 8: 2 p.m.
 CSU Wolstein Center, 2000 Prospect Ave., 216-687-4848
csuhoops.com

Cleveland Cavaliers vs. Detroit Pistons

Dec. 8: 7:30 p.m. Tickets: Call or visit website
 Quicken Loans Arena, One Center Court, 216-420-0000
clevelandcavaliers.com

Cleveland Jazz Orchestra - A Not So Silent Night

Dec. 8: 8 p.m. Tickets: \$25-\$45
 PlayhouseSquare, Hanna Theatre
 2067 E. 14th St., 216-241-6000
playhousesquare.org

Old Stone Church

Cleveland's Original Rock since 1820!



November 24 ■ Free Winterfest Events

- * 4PM—Singer/Songwriter Tia McGraff
- * 5PM—Hot Cocoa & Cookie Reception
- * Post Fireworks Christmas Choral Concert
- * Help feed the hungry — Non-perishable food collection from 3:30-5:30PM at the church



Gallery at Old Stone ■ M-F, 9AM-4PM

Trees & Wreaths Christmas Art Festival, Dec 3 – Jan 8

December 16 @ 10AM ■ Benjamin Britten's "A Ceremony of Carols" with choir and harp

December 23 @ 10AM ■ Christmas Pageant

Make Christmas memorable...

December 24 ■ Christmas Eve

- * 5PM—Family Service with Glow Sticks
- * 7:30PM—Christmas Music
- * 8PM—Traditional Candlelight Service



Visit OldStoneChurch.org for more opportunities to worship & serve



91 Public Square | across from Tower City | 216.241.6145



Warehouse District Holiday Tour

Dec. 5: 5:30 to 11 p.m.

Tickets: \$60 in advance, \$75 at the door. Tickets are \$45 for downtown residents, \$55 at the door. The group rate for 10 or more is \$45 per ticket, call for tickets **1300 W. Ninth St.** warehousedistrict.org, 216-344-3937

Get a first look at the Flats East Bank project while on a tour of the trendiest living spaces and offices and sampling food at the 13th annual Warehouse District Holiday Tour. "It's a great opportunity to see what is new and fresh in the Warehouse District," says Marcia Mandell, coordinator of the holiday tour that supports the Historic Warehouse District Development Corporation. Start with drinks at the Bridgeview Apartments Atrium and end with desserts and a rocking performance by Second Time Around at the Bingham Lobby and Community Room. Plus get a chance to view a unit that may convince you to change your address to West Ninth Street.

Dec. 9

The Cleveland Orchestra PNC Holiday Rainbow— Music of Chanukah

Dec. 9: 12:30 p.m. Tickets: \$7
Temple Tifereth Israel, 26000 Shaker Blvd., Beachwood, 216-231-1111
clevelandorchestra.com

Cleveland Browns vs. Kansas City Chiefs

Dec. 9: 1 p.m. Tickets: Call or visit website.
Cleveland Browns Stadium, 100 Alfred Lerner Way, 440-824-3434
clevelandbrowns.com

Olivia Newton-John

Dec. 9: 7:30 p.m. Tickets: \$10-\$70
PlayhouseSquare, Palace Theatre
1615 Euclid Ave., 216-241-6000
playhousesquare.org

Cleveland Jazz Orchestra - Jingle Bell Jazz

Dec. 9: 8 p.m. Tickets: \$25-\$45
PlayhouseSquare, Hanna Theatre
2067 E. 14th St., 216-241-6000
playhousesquare.org

Dec. 10

P.J. O'Rourke

Dec. 10: 6 p.m. Tickets: \$45, all tickets sold through Town Hall of Cleveland until day of the event.
PlayhouseSquare, Ohio Theatre
1511 Euclid Ave., 216-241-6000
playhousesquare.org

Dec. 11

Cleveland Cavaliers vs. Los Angeles Lakers

Dec. 11: 7 p.m. Tickets: Call or visit website
Quicken Loans Arena, One Center Court, 216-420-0000
clevelandcavaliers.com

The Cleveland Orchestra Celebrity Series: Charlie Chaplin's: Modern Times

Dec. 11: 8 p.m. Tickets: \$35-\$110
Severance Hall, 11001 Euclid Ave., 216-231-1111
clevelandorchestra.com
Chaplin's silent film, Modern Times, playing while orchestra is running.

Dec. 13

The Cleveland Orchestra PNC Holiday Rainbow— Kwanzaa Celebration

Dec. 13: 10 a.m. Tickets: \$7
Karamu House, 2355 E. 89th St., 216-231-1111
clevelandorchestra.com

Lake Erie Monsters vs. Rochester Americans

Dec. 13: 7 p.m. Tickets: \$10-\$65
Quicken Loans Arena, One Center Court, 216-420-0000
lakeeriemonsters.com

MEDICAL MUTUAL®
Health & Life Insurance

© 2012 Medical Mutual of Ohio

MedMutual.com



WF12 downtowncleveland.com

The gift that always gets applause!

PlayhouseSquare®

Call 216-830-7221 • playhousesquare.org

PlayhouseSquare District Development Corporation

Dec. 14

**The Cleveland Orchestra
PNC Holiday Rainbow—
Christmas Brass Quintet**
Dec. 14: 10 a.m. Tickets: \$7
Severance Hall, 11001
Euclid Ave., 216-231-1111
clevelandorchestra.com

**Cleveland Cavaliers
vs. Milwaukee Bucks**
Dec. 14: 7:30 p.m. Tickets:
Call or visit website
Quicken Loans Arena, One
Center Court, 216-420-0000
clevelandcavaliers.com

Dec. 15

**The Cleveland Orchestra
PNC Holiday Rainbow—
Christmas Brass Quintet**
Dec. 15: 11 a.m. Tickets: \$7
Severance Hall, 11001
Euclid Ave., 216-231-1111
clevelandorchestra.com

**Lake Erie Monsters
vs. Chicago Wolves**
Dec. 15: 7:30 p.m.
Tickets: \$10-\$65
Quicken Loans Arena, One
Center Court, 216-420-0000
lakeerimonsters.com

Neil Zaza's One Silent Night
Dec. 15: 8 p.m. Tickets: \$45-\$80
PlayhouseSquare, Hanna Theatre
2067 E. 14th St., 216-241-6000
playhousesquare.org
*Enjoy rock versions of
great holiday classics plus
some of Zaza's best-loved
original compositions.*

Dec. 16

**Cleveland Browns vs.
Washington Redskins**
Dec. 16: 1 p.m. Tickets:
Call or visit website.
Cleveland Browns Stadium
100 Alfred Lerner Way,
440-824-3434
clevelandbrowns.com

Straight No Chaser
Dec. 16: 3 & 7:30 p.m. Tickets:
\$29.50-\$46.50
PlayhouseSquare, State Theatre
1519 Euclid Ave., 216-241-6000
playhousesquare.org
*The 10-member quirky a cappella
group Straight No Chaser has
become a YouTube sensation
with more than 20 million views.*

Dec. 18

**Cleveland State
University Women's
Basketball vs. Ole Miss**
Dec. 18: 2 p.m.
CSU Wolstein Center, 2000
Prospect Ave., 216-687-4848
csuhoops.com

**Cleveland Cavaliers
vs. Toronto Raptors**
Dec. 18: 7 p.m. Tickets:
Call or visit website
Quicken Loans Arena, One
Center Court, 216-420-0000
clevelandcavaliers.com

**The Cleveland Orchestra
Celebrity Series: Pink
Martini—Joy To The World**
Dec. 18 & 19: 8 p.m.
Tickets: \$35-\$110
Severance Hall, 11001
Euclid Ave., 216-231-1111
clevelandorchestra.com
*Pink Martini returns for a holiday
celebration, with a multi-
cultural concert showcases
cabaret, samba and jazz.*

Dec. 19

**Cleveland State University
Men's Basketball vs.
Notre Dame (Ohio)**
Dec. 19: 7 p.m. Tickets: Start at \$8
CSU Wolstein Center, 2000
Prospect Ave., 216-687-4848
csuhoops.com

**Lake Erie Monsters
vs. Toronto Marlies**
Dec. 19: 7 p.m. Tickets: \$10-\$65
Quicken Loans Arena, One
Center Court, 216-420-0000
lakeerimonsters.com

Dec. 20

**Lake Erie Monsters
vs. Houston Aeros**
Dec. 20: 7 p.m. Tickets: \$10-\$65
Quicken Loans Arena, One
Center Court, 216-420-0000
lakeerimonsters.com

Dec. 21

A Son is Given
Dec. 21-23 Tickets: \$25-\$40
PlayhouseSquare, Hanna Theatre
2067 E. 14th St., 216-241-6000
playhousesquare.org

**Cleveland Cavaliers
vs. Indiana Pacers**
Dec. 21: 7:30 p.m. Tickets:
Call or visit website
Quicken Loans Arena
One Center Court, 216-420-0000
clevelandcavaliers.com

**Mannheim Steamroller
Christmas by Chip Davis**
Dec. 21: 8 p.m. Tickets: \$10-\$85
PlayhouseSquare, State Theatre
1519 Euclid Ave., 216-241-6000
playhousesquare.org

Dec. 22

Shen Yun
Dec. 22 & 23 Tickets: \$50-\$150
PlayhouseSquare, State Theatre
1519 Euclid Ave., 216-241-6000
playhousesquare.org



EASY TASTES GOOD.

START YOUR HOLIDAY PLANNING WITH US.



Whole Foods Market Cedar Center
13998 Cedar Road
University Hts., OH 44118
216-932-3918

Whole Foods Market Chagrin
27249 Chagrin Blvd.
Woodmere, OH 44122
216-464-9403

Cleveland State University Women's Basketball vs. New Hampshire
Dec. 22: 2 p.m.
 CSU Wolstein Center, 2000 Prospect Ave., 216-687-4848
csuhoops.com

Lake Erie Monsters vs. Houston Aeros
Dec. 22: 7:30 p.m.
 Tickets: \$10-\$65
 Quicken Loans Arena, One Center Court, 216-420-0000
lakeeriemonsters.com

Dec. 24

Family Service With Glow Sticks
Dec. 24: 5 p.m.
 Old Stone Church, 91 Public Square, 216-241-6145
oldstonechurch.org

MUSE presents Christmas Eve Dinner at The Ritz-Carlton, Cleveland
Dec. 24: 5:30-8:30 p.m.
 Reservations: \$65 per person, \$24 for wine pairing, \$29 per child
 The Ritz-Carlton, Cleveland 1515 W. Third St., 216-902-5255
ritzcarlton.com/cleveland

Festive Christmas Music
Dec. 24: 7:30 p.m.
 Old Stone Church, 91 Public Square, 216-241-6145
oldstonechurch.org

Traditional Candlelight Service
Dec. 24: 8 p.m.
 Old Stone Church, 91 Public Square, 216-241-6145
oldstonechurch.org

Dec. 25

MUSE presents Christmas Day Brunch at The Ritz-Carlton, Cleveland
Dec. 25: 10 a.m.-4 p.m.
 Reservations: \$65 per person; \$29 per child
 The Ritz-Carlton, Cleveland 1515 W. Third St., 216-902-5255
ritzcarlton.com/cleveland

Dec. 26

Trans-Siberian Orchestra: The Lost Christmas Eve
Dec. 26: 3 & 8 p.m. Tickets: \$30-\$67.50
 Quicken Loans Arena, One Center Court, 1-888-894-9424
theqarena.com
Rock holiday tradition for a new generation

Dec. 27

The Harlem Globetrotters
Dec. 27: 7 p.m. Tickets: \$40-\$80
 Quicken Loans Arena One Center Court, 1-888-894-9424
theqarena.com

Dec. 28

Cleveland State University Men's Basketball vs. Rio Grande
Dec. 28: 7 p.m. Tickets: Start at \$8
 CSU Wolstein Center 2000 Prospect Ave., 216-687-4848
csuhoops.com

Cleveland Cavaliers vs. Atlanta Hawks
Dec. 28: 7:30 p.m. Tickets: Call or visit website
 Quicken Loans Arena One Center Court, 216-420-0000
clevelandcavaliers.com

Dec. 29

Chimaira Christmas 13
Dec. 29: 6:30 p.m.
 Tickets: \$20-\$50
 House of Blues Cleveland 308 Euclid Ave., 216-523-2583
houseofblues.com

Lake Erie Monsters vs. Hamilton Bulldogs
Dec. 29: 7:30 p.m.
 Tickets: \$10-\$65
 Quicken Loans Arena, One Center Court, 216-420-0000
lakeeriemonsters.com

The Cleveland Orchestra: Jim Brickman—On A Winter's Night
Dec. 29: 8 p.m. Tickets: \$35-\$75
 Severance Hall, 11001 Euclid Ave., 216-231-1111
clevelandorchestra.com

Jeff Dunham—Disorderly Conduct
Dec. 29: 8 p.m. Tickets: \$49.50
 CSU Wolstein Center, 2000 Prospect Ave., 216-687-4848
wolsteincenter.com
Stand-up comedian Jeff Dunham brings his worldwide tour of puppetry and laughs to the CSU Wolstein Center.

Dec. 30

Cleveland State University Women's Basketball vs. Lake Erie
Dec. 30: 2 p.m.
 CSU Wolstein Center 2000 Prospect Ave. 216-687-4848
csuhoops.com

Dec. 31

MUSE presents New Year's Eve Dinner at The Ritz-Carlton, Cleveland
Dec. 31: 6:30 & 9 p.m.
 Reservations: \$120 per person; \$35 for wine pairing
 The Ritz-Carlton, Cleveland 1515 W. Third St., 216-902-5255
ritzcarlton.com/cleveland

The Cleveland Orchestra: Cleveland Pops—17th Annual Concert & Dance
Dec. 31: 9 p.m. Tickets: \$44-\$108
 Severance Hall, 11001 Euclid Ave., 216-231-1111
clevelandorchestra.com
Best of Broadway: Christiane Noll, Doug LeBreque, Debbie Gravitte



SHOP·DINE·PLAY

Forest City and Tower City are proud to support
Winterfest 2012



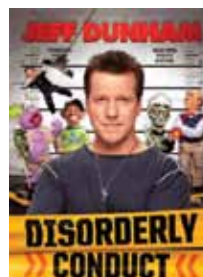
Tower City 2012 Holiday Entertainment*

The Toy Soldier & Fairy Godmother Holiday Show
 Holiday Express Train Ride
 Kringle's Inventionarium*
 Kringle's QuickSnap*
 Bruce The Talking Spruce
 The Twigbee Shop
 Kringle's Toy Shoppe*

The complete schedule can be found on our website.*

follow us

A PROUD PARTNER OF Winterfest 2012



JEFF DUNHAM
DECEMBER 29
8:00PM
 All Tickets \$49.50

GREEN DAY
TICKETS ON SALE NOW!
SPRING 2013
 Tickets \$30.50/\$55.00



IT HAPPENS AT THE
 CLEVELAND STATE UNIVERSITY

WOLSTEIN CENTER



TICKETS AVAILABLE AT WOLSTEINCENTER.COM,
 AT THE BOX OFFICE OR AT 1.877.468.4946

Circle in the City

Though Dec. 26: Wednesdays, 11:30 a.m.-1 p.m.

Cleveland Trust Rotunda
East Ninth Street and Euclid Avenue
universitycircle.org

Each week, a different institution will feature free programming, including the Cleveland Museum of Art, the Music Settlement, the Cleveland Institute of Music, Cleveland Orchestra, Cleveland Botanical Garden and MOCA Cleveland. Aside from special events and displays, the Cleveland Trust Rotunda has not been used since the late 1980s. This beautiful, historic landmark will be the host venue as visitors have the unique opportunity to learn more about these local Downtown institutions during the holidays. For more event information and a detailed schedule, visit universitycircle.org.



Rockin' New Year's Eve Package

Dec. 31: 9 p.m.-1 a.m.
Cost: \$375/couple
Hard Rock Café Cleveland
230 W. Huron Road, 216-830-7625
hardrock.com/cleveland
Renaissance Cleveland Hotel
24 Public Square, 1-800-468-3571
renaissancecleveland.com

Celebrate the New Year in style with the Renaissance Cleveland Hotel and Hard Rock Café. Package includes deluxe overnight accommodations, live music, abundant appetizer buffet, five drink tickets per person, champagne toast and more.

New Year's Eve Celebration at The Ritz-Carlton

Dec. 31: 9:30 p.m.-2 a.m.
The Ritz-Carlton, Cleveland
1515 W. Third St., 216-902-5255
ritzcarlton.com/cleveland
Ring in 2012 in style at Lobby Lounge on 6 with live music. No reservations required.

Jan. 1

New Year's Day Rock 'n' Roll Pajama Party Brunch at The Ritz-Carlton, Cleveland
Jan. 1: 10 a.m.-2:30 p.m.
Reservations: \$65 per adult, \$20 per child
The Ritz-Carlton, Cleveland
1515 W. Third St., 216-902-5255
ritzcarlton.com/Cleveland

Roll over to MUSE at the Ritz-Carlton and start off the new year with a rockin' brunch.

Jan. 2

Cleveland State University Men's Basketball vs. Kent State
Jan. 2: 6 p.m. Tickets: Start at \$8
CSU Wolstein Center, 2000 Prospect Ave., 216-687-4848
csuhoops.com

Jan. 3

Cleveland State University Women's Basketball vs. Butler
Jan. 3: 6 p.m. Tickets:
Call or visit website

CSU Wolstein Center,
2000 Prospect Ave.
216-687-4848
csuhoops.com

Lake Erie Monsters vs. Charlotte Checkers

Jan. 3: 7 p.m. Tickets: \$10-\$65
Quicken Loans Arena
One Center Court, 216-420-0000
lakeeriemonsters.com

Jan. 4

Lake Erie Monsters vs. Charlotte Checkers
Jan. 4: 7:30 p.m. Tickets: \$10-\$65
Quicken Loans Arena
One Center Court, 216-420-0000
lakeeriemonsters.com

CLEVELAND PUBLIC LIBRARY

Winterfest 2012

Our Holiday Festivities Kick Off at
10:00 a.m. on Saturday, November 24!

Toy Train Depot | 10 a.m.-4 p.m.
Louis Stokes Wing Lower Level Lobby
Interactive model train layouts

Reindeer Junction | 1-3 p.m.
Eastman Reading Garden
Live Reindeer!

Winterfest Wonderland | 1-4 p.m.
Main Library, Youth Services, 4th floor
Holiday stories and crafts.

Conductor Comet | 1-5 p.m.
Main Library/Louis Stokes Wing
Take a photo with Conductor Comet the Reindeer.

TubaChristmas Cleveland | 2 p.m.
Louis Stokes Wing Auditorium
Cookies and cider after the show!



325 Superior Avenue
216-623-2921


CLEVELAND PUBLIC LIBRARY
www.cpl.org

PROUD PARTNER OF
WINTERFEST 2012



Quicken Loans



Winterfest 2012 Sponsors

Presented By



Powered By



ClevelandPublicPower
Count on it

Corporate Partners



FORESTCITY



BakerHostetler

Turner



Foundation Support



The George Gund Foundation

The Kent H. Smith Charitable Trust



Media Partners



Cleveland MAGAZINE



THE PLAIN DEALER
POWERING CLEVELAND.COM

Supporting Partners

Cleveland Metropolitan School District
Harbor Group Management

Liquid Image
Standard Parking

Tower City Center
ABM Parking Services